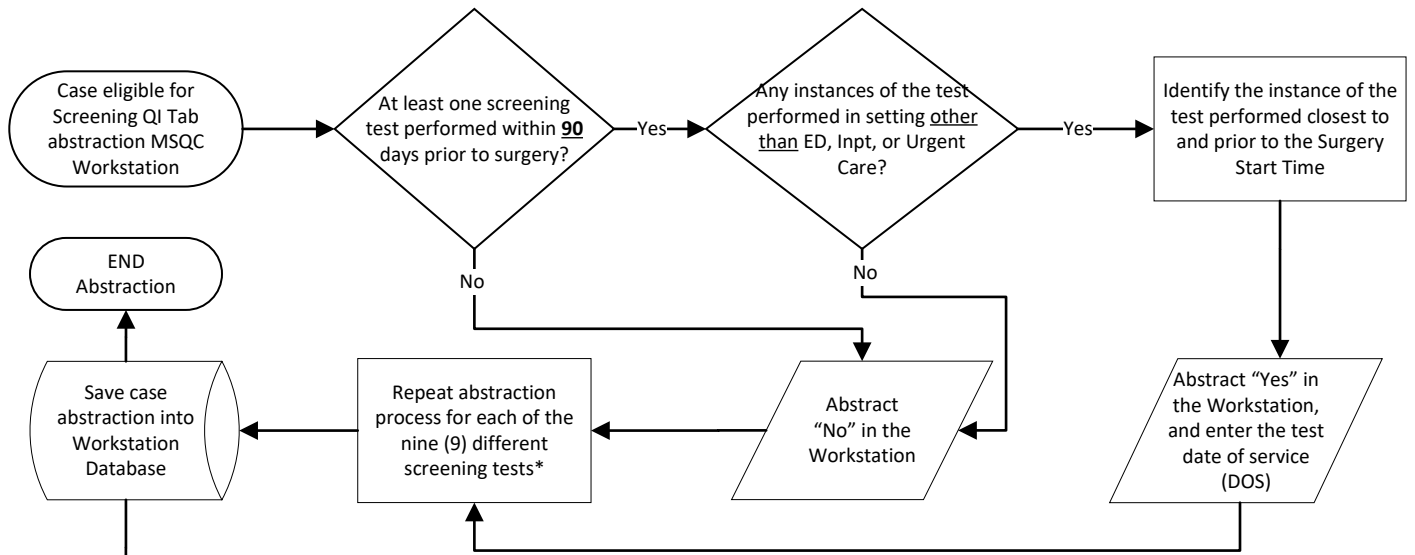
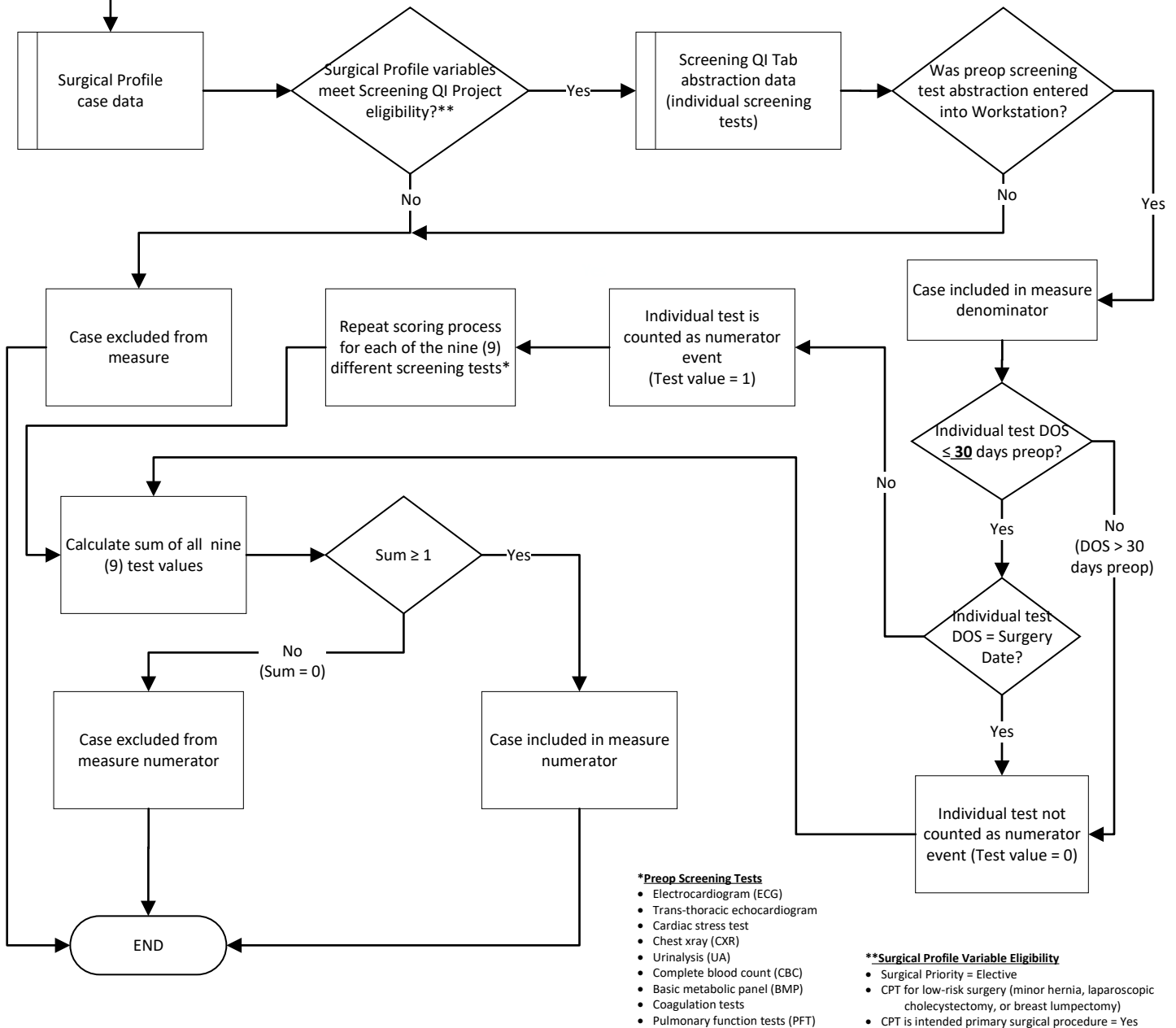


QI Screening Tab Workstation Abstraction



Goal 2c: Reduce Low-Value Preop Testing Algorithm



- \*Preop Screening Tests**
- Electrocardiogram (ECG)
  - Trans-thoracic echocardiogram
  - Cardiac stress test
  - Chest xray (CXR)
  - Urinalysis (UA)
  - Complete blood count (CBC)
  - Basic metabolic panel (BMP)
  - Coagulation tests
  - Pulmonary function tests (PFT)

- \*\*Surgical Profile Variable Eligibility**
- Surgical Priority = Elective
  - CPT for low-risk surgery (minor hernia, laparoscopic cholecystectomy, or breast lumpectomy)
  - CPT is intended primary surgical procedure = Yes